

## Discretionary Management Service – June 2016 Portfolio Performance

Your financial affairs in a safe pair of hands

### The Offering

The NLPFM Discretionary Management Service offers a number of different portfolios to clients. The needs of each client are considered independently and different portfolios are selected based on suitability and approach to risk after a discussion directly with the client. The philosophy of NLPFM is that irrespective of which standard portfolio or specially tailored portfolio is used, clients can rest assured that their money is looked after with their interests at heart.

### The Month in Review

June was an extraordinary month for global stock markets with the EU referendum dictating the moves. We saw wild oscillations in risk assets as Leave and Remain battled it out. Once Leave was the official winner we saw two big risk-off days followed by a huge rally in anticipation of central bank easing. Government bonds have performed very well in anticipation of interest rate cuts whilst alternatives generally held up well. Property was not immune to volatility with some funds falling on the increased uncertainty. The MSCI UK Index ended the month up 4.97% with the AFI Index up 0.49%. We performed well in the downturns with falling Sterling boosting our global holdings but then lagged the subsequent rally. We continue to deliver superior adjusted returns.

Performance & Volatility (%)	Inception Date	1 Month Returns	YTD Returns	1 Year Returns	3 Years Returns	5 Years Returns	Volatility Since January 2013	Returns since January 2008	Volatility Since January 2008
NLPFM Defensive	Jan 2013	2.08	2.99	4.96	21.30	N/A	4.14	N/A	N/A
NLPFM Cautious	Jan 2008	1.40	1.81	4.00	21.90	36.39	5.10	55.24	7.64
NLPFM Balanced	Jan 2008	1.62	2.04	4.44	22.97	37.10	5.73	55.00	8.33
NLPFM Progressive	Jan 2008	1.85	2.30	4.86	24.07	37.62	6.36	60.57	9.15
NLPFM Adventurous	Jan 2013	1.27	1.92	3.77	25.20	N/A	7.81	N/A	N/A
MSCI UK Index		4.97	6.89	3.38	15.76	30.72	11.11	37.76	14.89
AFI Balanced Index		0.49	0.16	1.70	16.47	29.39	6.34	41.95	10.47

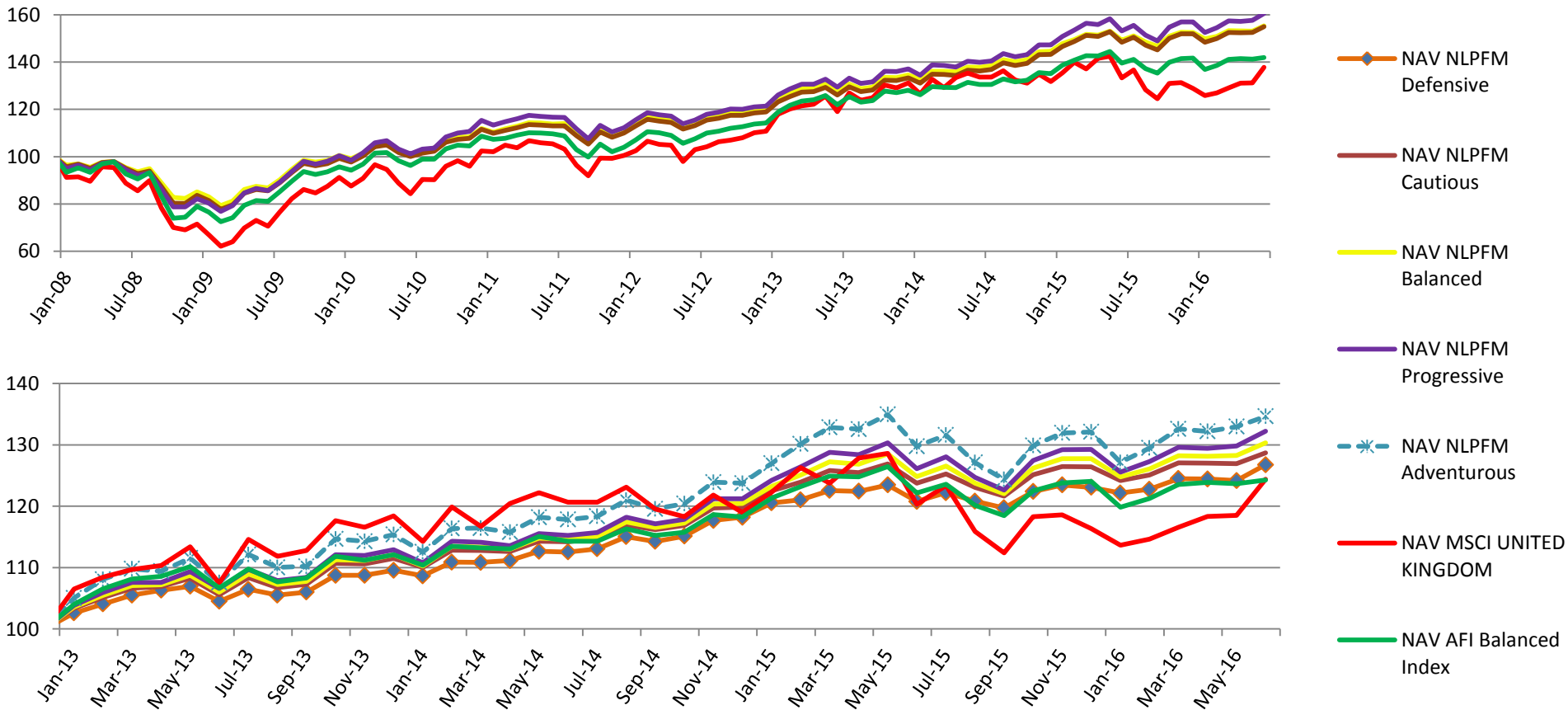
NLP Financial Management Ltd  
 2<sup>nd</sup> Floor, Charles House  
 108-110 Finchley Road  
 London  
 NW3 5JJ  
 www.nlpfm.co.uk  
 Tel 020 7472 5554

NLP Financial Management Limited does not accept liability for any errors or inaccuracies that may have occurred in the collection and recording of this data and will provide extra detail on data or graphs used in this note upon request. The 2008 performance figures are based on asset allocation decisions recorded by the NLP Financial Management Investment Panel. The above figures are indicative of the returns for the portfolios on a particular day, however not all portfolios are valued on the same day and variations may occur. Past performance is not a guide to the future.

NLP Financial Management Limited is authorised and regulated by the Financial Conduct Authority.

## Discretionary Management Service relative performance January 2008 to June 2016

The graphs below show the performance and volatility of our DMS portfolios against the MSCI UK Index and the AFI Balanced Index. The top graph is from inception in January 2008 to the end of June 2016. The graph at the bottom of the page also includes performance of our latest offerings which were launched in January 2013 – the Defensive and Adventurous Portfolios.



This is a marketing communication, intended for information only and should not be construed as an invitation or offer to buy and sell any investment vehicle, instrument or service. This information is based on historic data collected by NLP Financial Management Limited using Financial Express Analytics and are presented here in gross form before fees and taxes. The effect of management charges should be considered since these will create a drag on performance. Past performance is not a guide to the future. Changes in rates of exchange may also cause the value of investments to go up or down.